



• E P O C A •

THE TREE OF ECROF

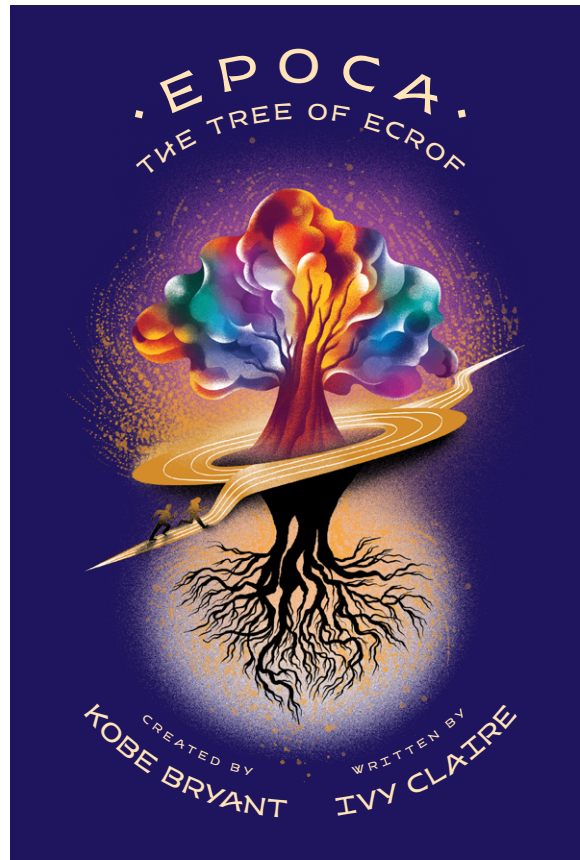
CREATED BY
KOBE BRYANT

WRITTEN BY
IVY CLAIRE

BOOK DISCUSSION GUIDE

Pretia is the first princess born to parents of both royal houses in Epoca. Rovi is an orphaned street kid running from the law. Both Rovi and Pretia are recruited to the most elite sports academy in the land, and they must learn to master their grana under harsh circumstances, trust the process, and discover their inner strength along the way. Will they overcome their fears, unleash deep, dark secrets, and determine their true destiny?





Discuss the title and cover illustration.

- What do trees represent?
- What is familiar and unfamiliar on the cover of EPOCA: THE TREE OF ECROF?

What does the cover illustration tell you about the story?

What is “fantasy” in literature?

Discuss books in which authors have created other worlds for readers to explore.

What is appealing about books about imaginary worlds?

What can you predict about the imaginary world in EPOCA: THE TREE OF ECROF?

How is royalty portrayed in fiction? Use examples from other fantasy novels you have read.

Discuss:

- The relationships between fantasy and truth
- Truths about the world that fantasy literature uncovers
- How fantasy literature helps us better understand ourselves
- The elements of fantasy





Think about . . .

1. What is a “Dreamer”?
2. What is a “Realist”?
3. What sport is this book mainly about?
4. How is EPOCA: THE TREE OF ECROF grounded in both truth and life experience?
5. Who holds the power within this world? Discuss the powers of the gods, the students, the king and queen, and the Trainers Janos and Satis.
6. Who are the main characters?
7. How does the author describe Pretia and Rovi?
8. Compare and contrast Pretia and Rovi as you read the book.
9. Who are the secondary characters? (**Mentor, sidekick, villain, reluctant villain**)
10. There are many heroes/heroines in the story. How are they important to the story? Which characters stand out for you?
11. What are EPOCA: THE TREE OF ECROF’S people like?
12. Are there distinct groups or classes?
13. What happens when someone is both? Or does not fit the characteristics?
14. How does society operate?
15. Where do your characters fit into the world?
16. How is the book structured?
17. Whose voice is the story told in (from whose point of view is the story told)?
18. Does the author use any structural or narrative devices like flashbacks or multiple voices in telling the story?
19. Is the story chronological?
20. What are the **central conflicts**?
21. Was there foreshadowing and suspense or did the author give things away at the beginning of the book? Is this effective?
22. What is the author’s use of language/ writing style?
23. How are the themes of prejudice and good vs. evil developed? Self-confidence? Trust and fear?
24. Keep track of your favorite passages.
25. What is the setting of the story?
26. What does the setting look, sound, and smell like? Consider things like landscape, climate, man-made structures, and people’s appearances.
27. Is the author descriptive?
28. How does she describe the concrete and the abstract?
29. Think about the location. Is it important to the story?
30. How does the author describe the landscape and community?
31. What is more important to the story: the characters or the plot? Is the plot moved forward by decisions of the characters, or are the characters at the mercy of the plot?
32. Is the action believable?
33. What events in the story stand out for you as memorable? Take notes.
34. Is there redemption in the book for any of the characters? Is this important to the story?



DISCUSSION QUESTIONS/BOOK TALK

- How do you see the book's title relating to the story? Why do you think it was chosen?
- Do you think EPOCA: THE TREE OF ECROF is a good title? How does it connect to the central ideas within the book?
- Does the cover tell a different story than you predicted?
- How did the story make you feel?
- What part made you feel amused, upset, scared, bored, angry, intrigued, happy?
- What do you think about the main characters, Pretia and Rovi?
- Were they believable?
- Why do you think Pretia, Vera, and Rovi became so close?
- Do you approve of their decisions and behavior?
- What drove them? What did they struggle with?
- Explore each of these characters' journeys from the beginning of the book to the end: Pretia, Rovi, Vera, Castor.
- Who did you relate to the most/least?
- Which character changed the least throughout the story?
- Which parts of the book stand out to you?
- Are there any quotes, passages, or scenes you found particularly compelling?
- Read one of your favorite passages aloud to the group.
- Were there parts of the book you thought were incredibly unique, out of place, thought provoking, or disturbing?
- What are the themes and central ideas of the story?
- How does the author develop these themes: magic, friendship, good vs. evil, trust, secrets, jealousy, dreamer vs. realist?
- What were the main points you think the author was trying to make?
- What do you think the author was trying to achieve? Did she succeed?
- Were you satisfied or disappointed with how the story ended?
- Were you surprised by it? Did it feel earned?
- Is anything left unresolved or ambiguous?
- What did you think about Janos as you were reading? Did you trust him or have doubts? What was revealed in the end?
- How do you picture the characters' lives after the end of the story?
- From Hollywood to Netflix, books are being adapted more and more frequently for screens big and small. Who would you cast in an adaptation for Rovi, Pretia, Janos, Vera, Pallas, Julian, Castor, Satis, King Airos and Queen Helena, Anara, Cassandra?



One of the central ideas of this book is the importance of teamwork. Work as a team to apply the “Elements of Fantasy” to EPOCA: THE TREE OF ECROF.

A Magic System

For a story to be considered “fantasy,” it needs to contain some sort of magic system. A magic system refers to things that occur or exist in a story that do not or cannot exist in the real world. There may be elements of sorcery, witchcraft, and enchantment; fantastical creatures and the supernatural; advanced abilities or powers.

Well-Developed Setting

Setting is a vital element within fantasy fiction. Stories take place in a completely new world. And even if your fantasy is based on Earth, it’s not the Earth we actually know. In fantasy writing, this process is often referred to as “world building.”

Cast of Complex Characters

- The hero/heroine
- The other hero/heroine
- The sidekick
- The mentor
- The friendly creature
- The evil creature
- The villain
- The reluctant villain

Central Conflict

The key to every good story is conflict. This is especially true in fantasy fiction, where the stakes are often higher for characters.

There are a few types of conflict within a fantasy story:

- Inner conflict, experienced by your characters
- Small-scale conflict, experienced between your characters
- Large-scale conflict, in which characters are up against a powerful external force

Power Structure/System of Government

In every fantasy world, there must be an established power structure. This usually refers to a system of government within the world.





MAKING CONNECTIONS



1. Describe Pretia and Rovi in detail. How are they alike and different?
2. Describe Pretia's relationship with her cousin Castor. How does Pretia wish the relationship was different?
3. How does the quote "keep your eye on the prize" relate to the story?
4. Why is Vera a replacement? What do you think that means for Vera? What does this say about her past, and what do you predict will happen in the future? Do you think she will stay with her Realist family?
5. If you were Pretia's friend, what advice would you have given her in the beginning, middle, and end of the story?

6. Choose passages that refer to **conflicts** in the story.

Man vs. man

Man vs. self

Man vs. nature

Man vs. society

Man vs. fate





7. Explain the circumstances around why the Tree of Ecrof was called the “tree of death.”

8. Go back to the story and write a definition for each new vocabulary word or phrase:

GRANA

FLAMEKEEPER

STAR STEALER

DEMIGEN

GRANOLOGIST

DREAMER

REALIST

VISUALIZATION

GOD OF SUFFERING

CHILD OF HOPE

CHOCO WATER

INFINITY TRACK

DECISION WOODS

REPLACEMENT





9. Castor called Rovi “Tree Killer” throughout the book. Explain why. How did this affect Rovi and eventually the community?
10. What kind of person is each character? Explain their beliefs, hopes, dreams, values, fears, strengths, weaknesses, and talents.
11. How does each character reveal themselves in the story?
12. Similarities among characters are often a clue to themes in the story. Place the characters from the novel *EPOCA: THE TREE OF ECROF* in one or more of the groups below.

PRETIA

ROVI

VERA

victim	hero/heroine	outsider
competitor	fighter	villain





How do the thoughts, feelings, actions, or words of the characters develop the themes in the story?

BRAVERY

FAMILY

TRUST

GOOD VS. EVIL

TEAMWORK

CONTROLLING
YOUR OWN
DESTINY

Explain the symbolism each represents in EPOCA: THE TREE OF ECROF:

Purple

Pretia

Blue

House Somni

Silk

House Relia

Dreamer

Rovi

Mixed race

Ecrof

Realist

Gods

Tree

Hurell

Moon

Epic Games

Laboratory

Grana Gleams

Grana Book





QUALITIES OF A HERO



Choose a character from the novel. For each quality listed in the left column, tell if each character has this quality. If you write “yes” in the second column, then you must list an event in the third column that proves that the character has that quality. If you write “no” in the second column, then you may leave the third column blank.

Character: _____

QUALITY	Does the character have this quality?	Event from the story
HONESTY		
FAIRNES		
BRAVERY		
KINDNESS		
CALMNESS		
INTELLIGENCE		
LOYALTY		

Look at the chart you filled in above. Based on this information, do you think the character is a hero? Explain your decision below.

